



# **NetworkAmp Manager**

**Owner's Manual**

---

# Important Information

---

## Special Notices

- The software and this owner's manual are the exclusive copyrights of Yamaha Corporation.
- Use of the software and this manual is governed by the license agreement which the purchaser fully agrees to upon breaking the seal of the software packaging. (Please read carefully the Software Licensing Agreement at the beginning of the printed *ACU16-C/NHB32-C Owner's Manual* before installing the application.)
- Copying of the software or reproduction of this manual in whole or in part by any means is expressly forbidden without the written consent of the manufacturer.
- Yamaha makes no representations or warranties with regard to the use of the software and documentation and cannot be held responsible for the results of the use of this manual and the software.
- This disc is a CD-ROM. Do not attempt to play the disc on an audio CD player. Doing so may result in irreparable damage to your audio CD player.
- Copying of the commercially available music sequence data and/or digital audio files is strictly prohibited except for your personal use.
- The screen displays as illustrated in this owner's manual are for instructional purposes, and may appear somewhat different from the screens which appear on your computer.
- Future upgrades of application and system software and any changes in specifications and functions will be announced separately.

## Trademarks

CobraCAD, CobraNet, and Peak Audio are trademarks of Cirrus Logic, Inc. Ethernet is a trademark of Xerox Corporation. Windows is a registered trademark of Microsoft Corporation. Yamaha is a trademark of Yamaha Corporation. All other trademarks are the property of their respective holders and are hereby acknowledged.

## Yamaha Web Site

Information about NetworkAmp Manager, related products, and other Yamaha professional audio equipment is available on the Yamaha Professional Audio Web site at: <http://www.yamaha.co.jp/product/proaudio/homeenglish/>.

Specifications and descriptions in this owner's manual are for information purposes only. Yamaha Corporation reserves the right to change or modify products or specifications at any time without prior notice. Since specifications, equipment, or options may not be the same in every locale, please check with your Yamaha dealer.

---

# Contents

---

<b>1</b>	<b>Welcome</b>	<b>4</b>
	Introduction	4
	What is CobraNet?	5
	Using Multiple PCs	5
<b>2</b>	<b>Getting Started</b>	<b>6</b>
	Installing NetworkAmp Manager	6
	Starting NetworkAmp Manager	6
	Quitting NetworkAmp Manager	6
	Configuring NetworkAmp Manager	7
	Working with Projects	8
<b>3</b>	<b>Touring NetworkAmp Manager</b>	<b>9</b>
	Main Window	9
	Menus	10
	Network Tree	11
<b>4</b>	<b>NHB Pages</b>	<b>14</b>
	CobraNet Page	14
	Patch Page	15
	Word Clock Page	17
<b>5</b>	<b>ACU Pages</b>	<b>18</b>
	CobraNet Page	18
	Patch Page	19
	Amp Pages	20
	Channel Detail Page	21
	Threshold Page	23
<b>6</b>	<b>Other Functions</b>	<b>24</b>
	Logging Events	24
	Locking NetworkAmp Manager	29
	Using COM & MIDI Modes	30
	Group View	31
	Control Link	34
	<b>Appendix</b>	<b>37</b>
	Troubleshooting	37
	Keyboard Shortcuts	37
	<b>Glossary</b>	<b>38</b>

# 1 Welcome

## Introduction

The Yamaha NetworkAmp Manager software is for controlling and monitoring Yamaha PCxxxxN series power amplifiers, the ACU16-C Amp Control Unit, and the NHB32-C Network Hub and Bridge. It runs on standard Windows PCs and can be connected to an ACU16-C or NHB32-C by using either USB or RS-232C. Multiple ACU16-Cs and NHB32-Cs can be managed from a single PC running NetworkAmp Manager, which can be connected to any ACU16-C or NHB32-C on the CobraNet network.

NetworkAmp Manager can record log files listing various operations and warnings (e.g., output shorts, overheating) for troubleshooting analysis after a performance.

Several PCs running NetworkAmp Manager can be connected to the CobraNet network, offering simultaneous control and monitoring from several locations within a venue.

NetworkAmp Manager can control and manage the following:

Up to 512 Yamaha PCxxxxN series power amplifiers (32 amps per ACU16-C)

Up to 4,096 amplifier channels (8 channels per amplifier)

Up to 16 ACU16-Cs

Up to 8 NHB32-Cs

## PCxxxxN Series Amp Parameters That Can Be Controlled

Parameter	Details
Power <sup>1</sup>	On/standby
Attenuator	63-step control
Input phase	Normal/reverse
Mute	On/off

1. Affects the entire amplifier. All other parameters can be set for each channel individually.

## PCxxxxN Series Amp Parameters That Can Be Monitored

Parameter	Details
Amp mode	Stereo/parallel/bridge
Input level	12-segment meter
Output level	12-segment meter (watt/volt)
Output clip	Output clipping indicator
Impedance	Indicates current load impedance
Protection	Protection system status
Temperature	Heatsink temperature, 12-segment meter (centigrade/Fahrenheit)

## What is CobraNet?

Developed by Peak Audio, CobraNet technology allows real-time uncompressed digital audio distribution over industry standard 100Base-T Ethernet networks. Up to 128 channels, 64 in each direction, can be carried simultaneously over a switched 100Base-T network (64 channels on repeater networks). Fiber-optic cables allow distances of two kilometers.

CobraNet supports a 48 kHz sampling rate with 16, 20, or 24-bit resolution. CobraNet devices can happily coexist with networked computers, printers, etc., on a switched 100Base-T Ethernet network, however, a dedicated network infrastructure is strongly recommended.

CobraNet distributes digital audio data in bundles, with one bundle per Ethernet data packet. A single bundle can carry eight channels of 20-bit/48 kHz digital audio, or seven channels of 24-bit/48 kHz digital audio. Bundles are numbered from 0 through 65,279. Bundles 1 through 255 are transmitted one-to-many (multicast). Bundles 256 through 65,279 are transmitted one-to-one (unicast). NetworkAmp Manager supports bundles 0 through 16,383 (multicast and unicast).

CobraNet's Serial Bridge feature allows serial data to be transmitted over the network. Normally, the ACU16-C and NHB32-C use the Serial Bridge to transmit amp control data. However, it can be used to transmit MIDI data (Program Change and Control Change) or AD824 head amp control data between any two NHB32-Cs on the network.

A glossary of CobraNet, NetworkAmp Manager, ACU16-C, and NHB32-C related terms is provided in this manual (see [page 38](#)). A wealth of information about CobraNet, with sections especially for designers and installers, is available on the Peak Audio Web site at <http://www.peakaudio.com>. If you are designing a CobraNet network, we strongly recommend that you visit this Web site and study the information available in order to take full advantage of the CobraNet technology. Peak Audio also provide a list of Ethernet devices that have been tested with CobraNet, including switching hubs and media converters.

## Using Multiple PCs

Several PCs running NetworkAmp Manager can be connected to the CobraNet network, offering simultaneous control and monitoring from several locations within a venue.

Up to 16 channels of real-time data (e.g., level meter information) can be transmitted across the network simultaneously. When operating NetworkAmp Manager on several PCs simultaneously, operation of the meter displays on the following pages may be interrupted:

- Amp pages
- Channel Detail page
- Group View page

When one of the above pages is selected, any other PCs displaying one of these pages will automatically switch to its Network page and display the same information. For example, if PC #1 is displaying the Amp 00–07 page, and PC #2 is displaying the Amp 24–31 page, if the Amp 08–15 page is selected on PC #1, PC #2 will switch to its Network page and display the same information. PCs that are not displaying one of the above pages do nothing.

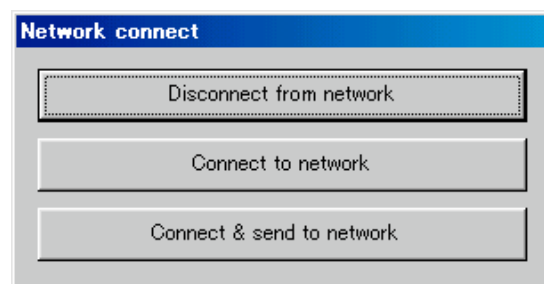
## 2 Getting Started

### Installing NetworkAmp Manager

System requirements and installation instructions for NetworkAmp Manager can be found in the printed *ACU16-C/NHB32-C Owner's Manual*.

### Starting NetworkAmp Manager

To start NetworkAmp Manager, double-click the NetworkAmp Manager icon. If a startup project has been specified on the General Setup dialog box (see [page 7](#)), that project is opened. Otherwise, the Open dialog box appears and you can select the project you want to open. NetworkAmp Manager can also be started by double-clicking a project file. In either case, the following dialog box appears.



**Disconnect from network:** Start NetworkAmp Manager but do not connect to the network.

**Connect to network:** Start NetworkAmp Manager and connect to the network, getting the settings of all devices on the network and updating the project settings accordingly.

**Connect & send to network:** Start NetworkAmp Manager, connect to the network, and send the project settings to all devices on the network, updating them accordingly.

*Caution: Don't transmit any audio data until all networked devices (ACU16-C, NHB32-C, and power amplifiers) have been turned on, the power amplifier's REMOTE indicators are on, and the system has stabilized (about 10 seconds). Doing so may produce loud noises.*

*Note: If you change any settings on the Windows Display control panel, NetworkAmp Manager's windows may not display properly. In this case, you should reset the Display control panel settings to their defaults.*

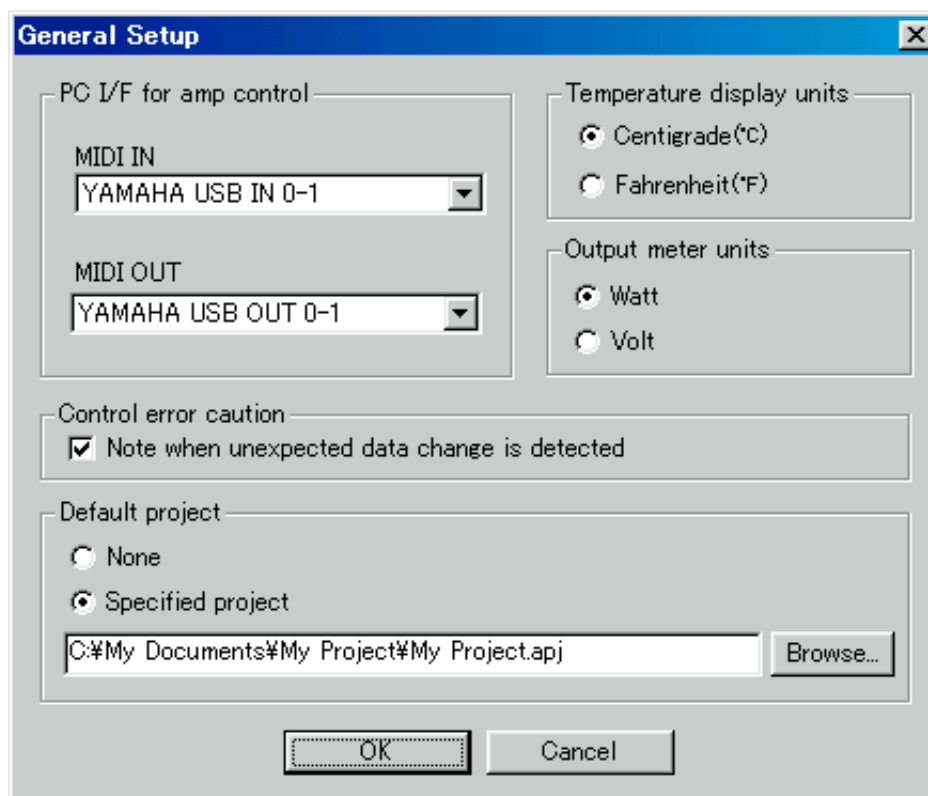
### Quitting NetworkAmp Manager

To quit NetworkAmp Manager, choose Exit from the File menu, or click the main window's Close button. A confirmation message appears. Click Yes to quit. Click No to cancel.

If there are no unsaved changes, NetworkAmp Manager quits. If there are unsaved changes, a dialog box asking if you want to save the changes before quitting appears. Click Yes to save the changes and quit. Click No to quit without saving the changes.

## Configuring NetworkAmp Manager

The General Setup dialog box is used to configure NetworkAmp Manager. To open the General Setup dialog box, choose General Setup from the Option menu.



**PC I/F for amp control:** These options are used to specify the MIDI interface NetworkAmp Manager should use to communicate with the connected ACU16-C/NHB32-C. The options available depends on what MIDI drivers you have installed on your PC. Choose the Yamaha CBX Driver (for use with serial ports) or Yamaha USB Driver (for use with USB ports). See the *ACU16-C/NHB32-C Owner's Manual* for information on installing these drivers.

**Control error caution:** When this option is selected, a message is displayed in the Log window when a parameter is adjusted on another PC or an ACU16-C or NHB32-C.

**Default project:** These options determine how NetworkAmp Manager behaves when it's started. When "None" is selected, the project open dialog box appears automatically and you can select a project file manually. When the "Specified project" option is selected, the specified project is opened automatically. Click the Browse button to select the project file to be opened automatically. If you enter the filename manually, be sure to include the full path (e.g., C:\My Documents\NetworkAmp Manager\My Project.apj).

**Temperature display units:** These options determine the units NetworkAmp Manager uses to display temperature values: Centigrade (C) or Fahrenheit (F).

**Output meter units:** These options determine the units NetworkAmp Manager uses to display power amplifier output values: Watt (W) or Volt (V).

The "PC I/F for amp control" and "Default project" settings are stored in the Windows Registry. All other settings are stored in the project file.

## Working with Projects

NetworkAmp Manager setups are stored as projects.

Project files have the file name extension “.apj”.

- To create a new project, choose New from the File menu.
- To open a previously saved project, choose Open from the File menu.
- To save the current project, choose Save from the File menu.
- To save the current project with a new name, choose Save As as from the File menu.

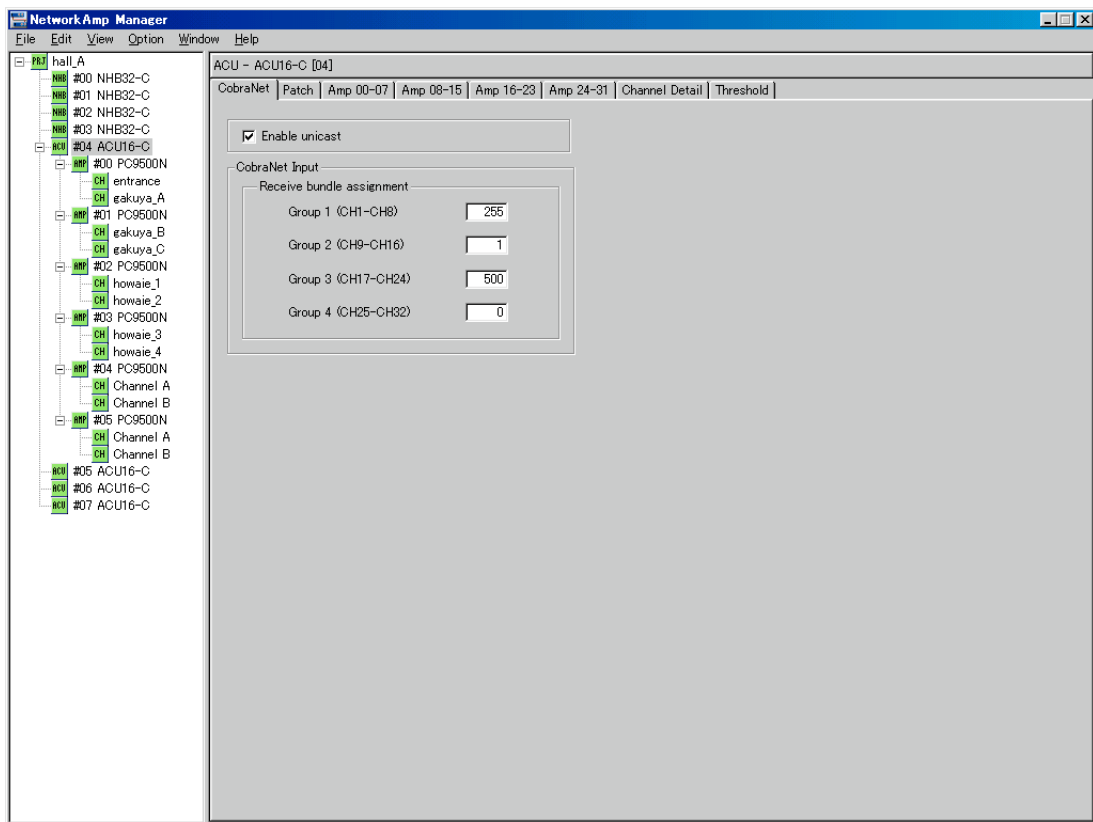
Only one project can be open at a time. If you create a new project or open a previously saved project, you’ll be prompted to save any unsaved changes.



## 3 Touring NetworkAmp Manager

### Main Window

This is NetworkAmp Manager's main window. The left pane displays the CobraNet network tree, consisting of ACU16-Cs, NHB32-Cs, and power amps. The right pane displays the various NHB and ACU pages. The name and unit ID of the device currently selected in the network tree are displayed at the top of the right pane. If it's an ACU16-C, "ACU - name [Unit ID]" is displayed. If it's an NHB32-C, "NHB - name [Unit ID]" is displayed. You can set the device names in NetworkAmp Manager (see [page 12](#)). Unit IDs are set on the actual devices.



## Menus

### File

<b>New</b>	Creates a new project
<b>Open</b>	Opens an existing project
<b>Save</b>	Saves the current project
<b>Save As</b>	Saves the current project with a new name
<b>Disconnect from Network<sup>1</sup></b>	Disconnects NetworkAmp Manager from the network
<b>Connect to Network<sup>1</sup></b>	Connects NetworkAmp Manager to the network
<b>Connect &amp; Send to Network</b>	Connects NetworkAmp Manager to the network and sends the project settings to all devices on the network
<b>Exit</b>	Quits NetworkAmp Manager

1. A check mark appears next to either of these commands, indicating the current status. If the connected ACU16-C/NHB32-C is turned off, the check mark appears next to the "Disconnect from Network" command and a disconnection warning message appears.

### Edit

<b>Cut</b>	Moves the currently selected item to the clipboard
<b>Copy</b>	Copies the currently selected item to the clipboard
<b>Paste</b>	Pastes the item on the clipboard to the current location
<b>Delete</b>	Deletes the currently selected item

These commands are available only when an editable text field is selected, including the threshold values on the ACU Threshold page (see [page 23](#)). These commands also appear on the pop-up Edit menu that appears when you right-click an editable item. The pop-up menu also has Undo and Select All commands.

### View

<b>Group View</b>	Displays the Group View page
<b>Control Link</b>	Displays the Control Link page

### Option

<b>Log Setup</b>	Opens the Log Setup dialog box
<b>Operation Lock</b>	Opens the Operation Lock dialog box
<b>COM/MIDI Mode</b>	Opens the COM/MIDI Mode dialog box
<b>General Setup</b>	Opens the General Setup dialog box
<b>Factory Reset</b>	Resets the ACU16-C or NHB32-C connected to your PC

### Window

<b>Log Window</b>	Opens the Log window
-------------------	----------------------

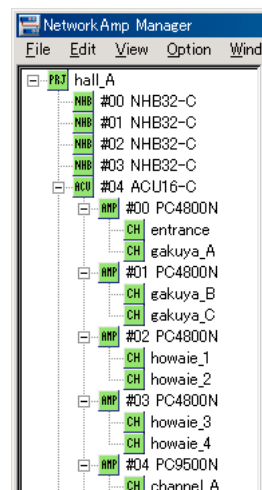
### Help

<b>Help<sup>1</sup></b>	Opens this manual (PDF format)
<b>Help Topics</b>	Selects the language, English, Japanese, German, French, or Spanish, of the <i>Network Amp Manager Owner's Manual</i>
<b>About</b>	Opens the About NetworkAmp Manager window

1. If this command is unavailable, select a language from the Help Topics submenu.

## Network Tree

The network tree displays all the ACU16-Cs, NHB32-Cs, and power amps in the project in a tree-like structure. Items are displayed in order of unit ID. The tree can be expanded and collapsed by clicking the plus and minus symbols.



The following table lists the items that can appear in the network tree.

Item	Icon				Label	Parent node	Maximum number
	Offline	Online	COM/MIDI mode	SNMP			
PRJ				—	Project name	—	1
ACU					Unit ID + ACU16-C name	PRJ	16
NHB					Unit ID + NHB32-C name	PRJ	8
AMP				—	Unit ID + amp name	ACU	32 (per ACU16-C)
CH				—	Channel name	Amp	8 (per amp)

Networked devices can be offline, online, or in COM/MIDI mode, and the current status is indicated by icon color, as shown in the table above. While NetworkAmp Manager is receiving data from a device, the corresponding icon flashes.

When the PRJ icon is gray (offline), no networked devices are being monitored or controlled (i.e., NetworkAmp Manager is disconnected from the network). When it's green (online), networked devices are being controlled and monitored (i.e., NetworkAmp Manager is connected to the network). When it's yellow, COM/MIDI mode is being used.

When an ACU, NHB, AMP, or CH icon is gray (offline), that device is either not turned on or not connected. When an icon is green (online), the device is turned on and connected and can be controlled and monitored. When an icon is yellow, COM/MIDI mode is being used.

When an ACU16-C or NHB32-C is being set externally via SNMP (Simple Network Management Protocol), it's icon appears black.

## PRJ



The PRJ icon always appears at the top of the network tree.

The following menu appears when you right-click the PRJ icon.



**Add:** Adds an ACU16-C or NHB32-C to the project. When you choose either of these commands, a dialog box appears for you to specify the device name and unit ID.

**Rename:** Opens the Rename dialog box so you can rename the project.

## ACU



When you click an ACU icon, the ACU pages appear in the main window's right pane.

The following menu appears when you right-click an ACU icon.



**Add:** Adds a PCxxxxN series power amplifier to the ACU16-C. When you add an amplifier, a dialog box appears for you to specify the device name, unit ID, and channel mode (i.e., Parallel, Bridge, or Stereo).

As of this writing, the Yamaha PC9500N and PC4800N power amplifiers can be added to projects. Please check the Yamaha Professional Audio Web site at the following URL for news and information on networkable power amplifiers to be released in the future, and for information on other Yamaha professional audio products:

<http://www.yamaha.co.jp/product/proaudio/homeenglish/>.

Amplifiers are defined in the device definition file. As and when Yamaha introduce new networkable power amps, an updated device definition file will be made available.

**Delete:** Deletes the ACU16-C from the project. A confirmation message appears before the ACU16-C is deleted.

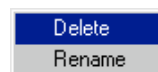
**Rename:** Opens the Rename dialog box so you can rename the ACU.

## NHB



When you click an NHB icon, the NHB pages appear in the main window's right pane.

The following menu appears when you right-click an NHB icon.



**Delete:** Deletes the NHB32-C from the project. A confirmation message appears before the NHB32-C is deleted.

**Rename:** Opens the Rename dialog box so you can rename the NHB.

### AMP



When you click an AMP icon, the ACU Amp pages appear in the main window's right pane. The following menu appears when you right-click an AMP icon.



**Delete:** Deletes the amplifier from the project. A confirmation message appears before the amplifier is deleted.

**Rename:** Opens the Rename dialog box so you can rename the amplifier.

### CH



When you click a CH icon, the ACU Channel Detail page appears in the main window's right pane.

The following menu appears when you right-click a CH icon.



**Rename:** Opens the Rename dialog box so you can rename the amplifier channel.

## 4 NHB Pages

This chapter explains the NHB pages, which can be selected while an NHB32-C is selected in the network tree.

Devices on a CobraNet network transmit and receive audio data by matching bundle numbers. Matching the bundle number on the transmitting and receiving devices is analogous to making a physical cable connection between two devices. For example, if the Transmit bundle assignment (CobraNet Output) on NHB32-C #1 is set to bundle #5, and the Receive bundle assignment (CobraNet Input) on NHB32-C #2 is also set to bundle #5, audio data in bundle #5 will be carried from NHB32-C #1 to NHB32-C #2.

### CobraNet Page

This page is used to assign CobraNet bundles and to set the audio resolution of transmitted bundles.

NHB - NHB32-C [01]

CobraNet | Patch | WordClock

☒ Enable unicast

**CobraNet Input**

Receive bundle assignment

Group 1 (CH1-CH8)	7
Group 2 (CH9-CH16)	255
Group 3 (CH17-CH24)	500
Group 4 (CH25-CH32)	32

**CobraNet Output**

Transmit bundle assignment

Group 1 (CH1-CH8)	1
Group 2 (CH9-CH16)	2
Group 3 (CH17-CH24)	3
Group 4 (CH25-CH32)	4

Audio resolution

☒ 20 bit

☐ 24 bit

CobraNet distributes digital audio data in bundles. A single bundle can carry eight channels of 20-bit/48 kHz digital audio, or seven channels of 24-bit/48 kHz digital audio. The NHB32-C supports bundles 0 through 16,383 (multicast and unicast). Bundle 0 is not really a bundle as such, more of a null setting used to disable transmission or reception.

**Enable Unicast:** When this option is unselected, multicast bundles 0 through 255 can be specified. When it's selected, bundles 0 through 16,383 can be specified. Bundles 256 through 16,383 are unicast bundles.

**Receive bundle assignment:** These parameters are used to specify the bundles that contain the CobraNet channels you want to patch to the NHB32-C's AES/EBU outputs. You can patch the individual channels in each bundle on the NHB Patch page (see [page 15](#)).

*Note: Two or more devices cannot transmit data in the same bundle. So do not assign the same bundle to more than one group.*

**Transmit bundle assignment:** These parameters are used to specify the bundles that contain the CobraNet channels you want to patch to the NHB32-C's AES/EBU inputs. You can patch the individual channels in each bundle on the NHB Patch page (see [page 15](#)).

**Audio resolution:** This option is used to specify the audio resolution for bundle transmission: 20 or 24 bit. Be sure to select 24-bit if you are using 24-bit digital audio. Otherwise, your audio will be truncated to 20-bit.

## Patch Page

This page is used to assign AES/EBU inputs and outputs to individual CobraNet channels and to store and recall assignment patches. Before making any assignments, you must specify the bundles that contain the CobraNet channels you want to patch (see [page 14](#)).

**EDIT indicator**

NHB - NHB32-C [01]

CobraNet Patch WordClock

Store Patch No. 03 EDIT

Recall Title

AES/EBU In to CobraNet CobraNet to AES/EBU Out

		AES/EBU 1								AES/EBU 2								AES/EBU 3								AES/EBU 4								
		1	2	3	4	5	6	7	8	9	10	11	12	13	14	15	16	17	18	19	20	21	22	23	24	25	26	27	28	29	30	31	32	
CobraNet Bundle	Group 1	1	•																															
		2		•																														
		3			•																													
		4				•																												
		5					•																											
		6						•																										
		7							•																									
		8								•																								
	Group 2	9									•																							
		10										•																						
		11											•																					
		12												•																				
		13													•																			
		14														•																		
		15															•																	
		16																•																
	Group 3	17																		•														
		18																			•													
		19																				•												
		20																					•											
		21																						•										
		22																							•									
		23																								•								
		24																									•							
	Group 4	25																										•						
		26																											•					
		27																												•				
		28																													•			
		29																														•		
		30																															•	
		31																																•
		32																																

AES/EBU inputs and outputs are assigned to CobraNet channels on two 32 x 32 grids, one for inputs, one for outputs. To make an assignment, click on the grid at the relevant intersection. A blue spot appears when an assignment has been made. To cancel an assignment, click the blue spot.

Only one AES/EBU input or output can be assigned to each CobraNet channel. The bundle number assigned to each group of CobraNet channels is displayed along the left side of the grid. If the “24 bit” option on the NHB CobraNet page is selected (see [page 14](#)), the number of channels in each group is reduced to seven, making channels 8, 16, 24, and 32 unavailable.

Network efficiency can be optimized by using all channels in each bundle instead of, for example, using four channels in two bundles or two channels in four bundles.

**AES/EBU In to CobraNet:** This tab is used to assign AES/EBU inputs to CobraNet channels.

**CobraNet to AES/EBU Out:** This tab is used to assign CobraNet channels to AES/EBU outputs.

**Store/Recall:** These buttons are used to store and recall patches. A patch consists of all AES/EBU input and output to CobraNet channel assignments. There are 100 patch memories. Patch #0 is a read-only memory containing initial assignments, with each AES/EBU input and output assigned to the correspondingly numbered CobraNet input and output. For example, AES/EBU input #1 is assigned to CobraNet output #1, AES/EBU input #2 is assigned to CobraNet output #2, and so on. Up to 99 patches can be stored in patch memories 1 through 99.

To store a patch, use the Up and Down arrow buttons to select a patch memory from 1 to 99, enter a title, and then click the Store button. The patch is immediately transferred to, and stored in the NHB32-C, where it is can be recalled directly from the front panel.

To recall a patch, use the Up and Down arrow buttons to select a patch memory from 0 to 99, and then click the Recall button.

When a patch is edited, the “EDIT” indicator appears next to the patch number. It disappears when the patch is stored or another patch is recalled.



## Word Clock Page

This page is used to select the NHB32-C's wordclock source.

NHB - NHB32-C [01]

CobraNet | Patch | WordClock

Master clock

48k Hz

LOCK

Word clock source select

AES/EBU 1

1/2 UNLOCK 3/4 UNLOCK 5/6 UNLOCK 7/8 UNLOCK

AES/EBU 2

1/2 UNLOCK 3/4 UNLOCK 5/6 UNLOCK 7/8 UNLOCK

AES/EBU 3

1/2 UNLOCK 3/4 UNLOCK 5/6 UNLOCK 7/8 UNLOCK

AES/EBU 4

1/2 UNLOCK 3/4 UNLOCK 5/6 UNLOCK 7/8 UNLOCK

Network

WORD CLOCK IN

**Master clock:** This indicator shows the wordclock lock status of the NHB32-C: Locked or Unlocked. It works in unison with the LOCK indicator on the NHB32-C's front panel.

**Word clock source select:** These options are used to select the NHB32-C's wordclock source, which can be a pair of AES/EBU inputs, the CobraNet network, or the NHB32-C's BNC WORD CLOCK IN connector. A confirmation message appears when you change the wordclock source. The wordclock source can also be selected on the NHB32-C's front panel.

*Note: When you change the wordclock settings of your system, some devices may output noise, so turn down your power amps beforehand, otherwise you may damage your speakers.*

## 5 ACU Pages

This chapter explains the ACU pages, which can be selected while an ACU16-C is selected in the network tree.

Devices on a CobraNet network transmit and receive audio data by matching bundle numbers. Matching the bundle number on the transmitting and receiving devices is analogous to making a physical cable connection between two devices. For example, if the Transmit bundle assignment (CobraNet Output) on an NHB32-C is set to bundle #4, and the Receive bundle assignment (CobraNet Input) on an ACU16-C is also set to bundle #4, audio data in bundle #4 will be carried from the NHB32-C to the ACU16-C.

### CobraNet Page

This page is used to assign CobraNet bundles.

ACU - ACU16-C [04]

CobraNet | Patch | Amp 00-07 | Amp 08-15 | Amp 16-23 | Amp 24-31 | Channel Detail | Threshold

☒ Enable unicast

CobraNet Input

Receive bundle assignment

Group 1 (CH1-CH8)	255
Group 2 (CH9-CH16)	1
Group 3 (CH17-CH24)	500
Group 4 (CH25-CH32)	0

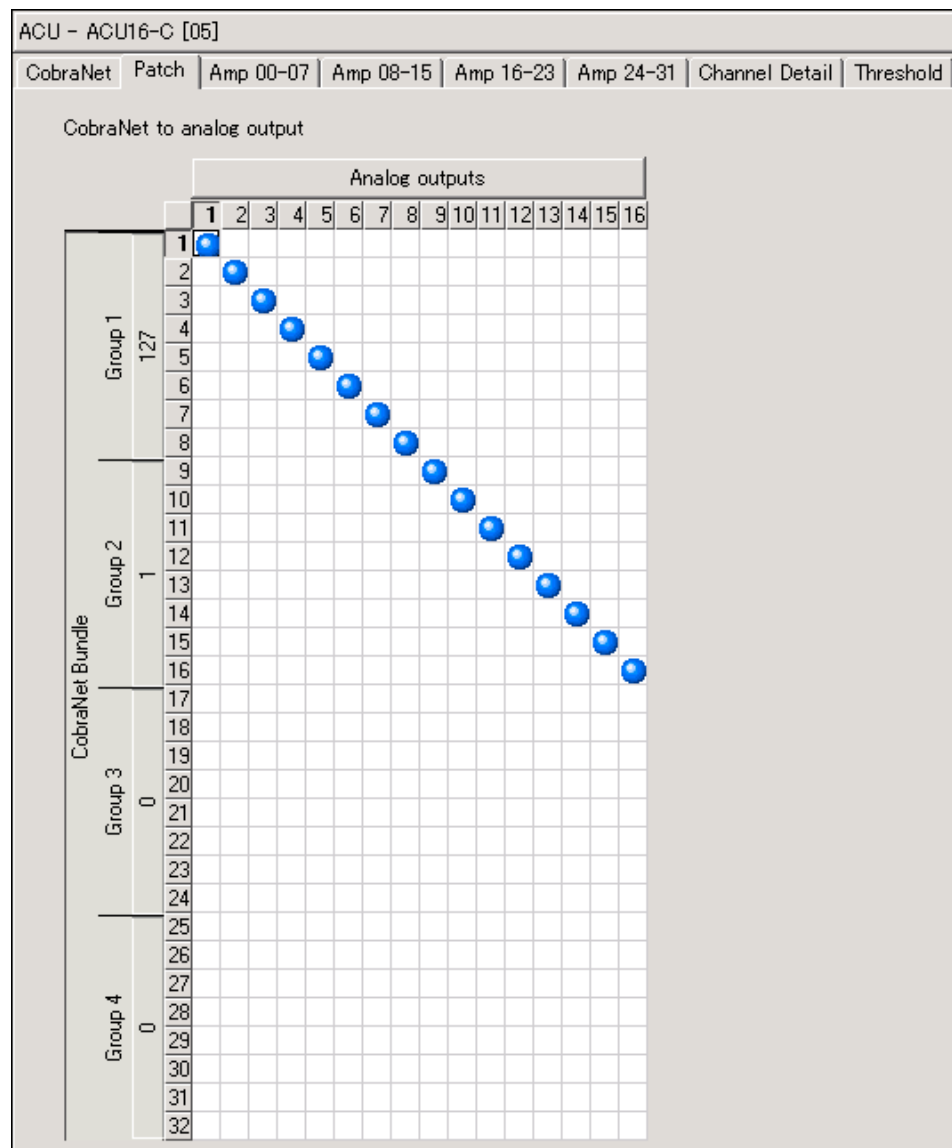
You can specify which bundles you want the ACU16-C to receive. The ACU16-C supports bundles 0 through 16,383 (multicast and unicast). Bundle 0 is not really a bundle as such, more of a null setting used to disable transmission or reception.

**Enable unicast:** When this option is unselected, multicast bundles 0 through 255 can be specified. When it's selected, bundles 0 through 16,383 can be specified. Bundles 256 through 16,383 are unicast bundles.

**Receive bundle assignment:** These parameters are used to specify the bundles that contain the CobraNet channels you want to patch to the ACU16-C's analog outputs. You can patch the individual channels in each bundle on the ACU Patch page (see [page 19](#)).

## Patch Page

This page is used to assign individual CobraNet channels to ACU16-C analog outputs. Before making any assignments, you must specify the bundles that contain the CobraNet channels you want to patch (see [page 18](#)).



CobraNet channels are assigned to ACU16-C analog outputs on a 16 x 32 grid. To make an assignment, click on the grid at the relevant intersection. A blue spot appears when an assignment has been made. To cancel an assignment, click the blue spot.

Only one CobraNet channel can be assigned to each ACU16-C output. The bundle number assigned to each group of CobraNet channels is displayed along the left side of the grid.

## Amp Pages

The Amp pages are used to control and monitor power amplifiers. There are four Amp pages: Amp 00–07, Amp 08–15, Amp 16–23, and Amp 24–31. Each page can display the channels of up to eight power amplifiers. Power amplifiers can have 2, 4, 6, or 8 channels. The screen shot shown here features two channels of a PC9500N power amplifier.

**Amp name:** This displays the power amplifier's name. Only the first 21 letters of the name are displayed. To display the name in full, place the mouse pointer over the name.

**POWER button:** This button is used to set the power amplifier to On or Standby.

**Mode indicator:** This displays the power amplifier mode for each pair of channels: STEREO, PARALLEL, or BRIDGE.

**Channel name:** Channel names are displayed here. To display the name in full, place the mouse pointer over the name. To name a channel, right-click its icon in the network tree and choose Rename from the pop-up menu.

**PROTECT indicator:** The status of the power amplifier's protection system is displayed here. Normally there's no indication. If the amplifier's protection system is activated, for example, the power supply to the power amplifier's driver section fails because of overheating, "PROTECT" is displayed. It's also displayed if the power amplifier is set to Standby by clicking the POWER button in NetworkAmp Manager.

**Output CLIP indicator:** This indicator lights up red when the channel is clipping.

**Output meter:** This 12-segment meter displays the channel's output level in either watts or volts (see preference on [page 7](#)).

**Impedance indicator:** This displays the channel's load impedance.

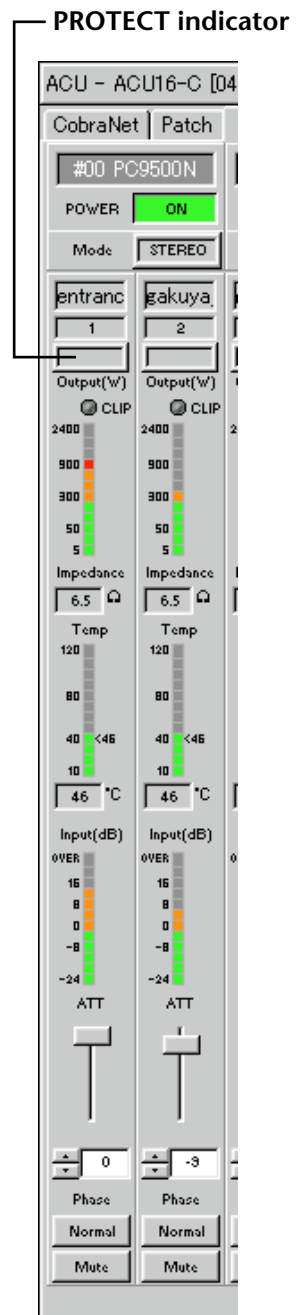
**Temp meter:** This 12-segment meter displays the channel's temperature in either centigrade or Fahrenheit (see preference on [page 7](#)). The value on the right of the meter is the temp peak hold value. The numerical value below the meter is the current temperature. To reset peak temp hold, right-click the meter and choose "Reset temp hold on this channel" or "Reset temp hold on all channels" from the pop-up menu.

**Input meter:** This 12-segment meter displays the channel's input level in dB.

**ATT fader:** This fader attenuates the channel's input signal. The numerical value below the fader is the current attenuation setting in dB. Attenuation can also be set by clicking the Up and Down arrow buttons, or by entering a value from the keyboard.

**Phase button:** This button is used to set the channel's input signal phase: Normal or Reversed.

**Mute button:** This button is used to mute the channel.



## Channel Detail Page

The Channel Detail page offers a detailed view of each channel. It can be opened by clicking the Channel Detail tab while an ACU16-C is selected in the network tree, or by clicking a power amplifier channel icon in the network tree.

ACU - ACU16-C [04]

CobraNet | Patch | Amp 00-07 | Amp 08-15 | Amp 16-23 | Amp 24-31 | **Channel Detail** | Threshold

Channel select

Amp:  Amp name:

CH:  CH name:

Model information:

POWER

Mode:

ATT  dB

Phase

Input meter

OVER  dB

Output meter

CLIP  W

Warning threshold

Temperature

Present:  °C

Max hold:  °C

Warning threshold

Load impedance

Present:  Ω

**PROTECT**  
indicator

**Channel select:** This section is used to select the power amplifier channel that you want to view. Use the Amp pop-up menu to select a power amplifier. Use the CH pop-up menu to select a channel. The names of the selected amplifier and channels are displayed next to the pop-up menus. The Model information field displays information about the selected power amplifier.

**POWER button:** This button is used to set the power amplifier to On or Standby.

**PROTECT indicator:** The status of the power amplifier's protection system is displayed here. Normally there's no indication. If the amplifier's protection system is activated, for example, the power supply to the power amplifier's driver section fails because of overheating, "PROTECT" is displayed. It's also displayed if the power amplifier is set to Standby by clicking the POWER button in NetworkAmp Manager.

**Mode indicator:** This displays the power amplifier mode for each pair of channels: STEREO, PARALLEL, or BRIDGE.

**ATT fader:** This fader attenuates the channel's input signal. The numerical value below the fader is the current attenuation setting in dB. Attenuation can also be set by clicking the Up and Down arrow buttons, or by entering a value from the keyboard.

**Phase button:** This button is used to set the channel's input signal phase: Normal or Reversed.

**Mute button:** This button is used to mute the channel.

**Output meter:** This 12-segment meter displays the channel's output level in either watts or volts (see preference on [page 7](#)). The Present value is the current output level. The yellow triangle indicates the warning threshold specified on the Threshold page (see [page 23](#)).

**Input meter:** This 12-segment meter displays the channel's input level in dB. The Present value is the current input level.

**Temperature:** This 12-segment meter displays the channel's temperature in either centigrade or Fahrenheit (see preference on [page 7](#)). The Present value is the current temperature. The maximum temperature is displayed graphically by the green triangle at the right of the meter, and numerically by the Max hold value. To reset the max hold, right-click the meter and choose "Reset temp hold on this channel" or "Reset temp hold on all channels" from the pop-up menu.

**Load impedance:** This is the channel's load impedance. The Present value is the current load impedance.

## Threshold Page

This page is used to specify the wattage, temperature, and the minimum and maximum load impedance thresholds at which you want NetworkAmp Manager to issue a warning. The thresholds can be set individually for each power amplifier channel. Warnings are displayed in the Log window and recorded in the log file.

AMP		CH		Wattage [w]	Temp[°C]	Impedance max[Ω]	Impedance min[Ω]
No.	Name	No.	Name				
00	PC9500N	1	Channel A	2200	80	100	1.0
		2	Channel B	2200	80	100	1.0
01	PC9500N	1	Channel A	2200	80	100	1.0
		2	Channel B	2200	80	100	1.0

Warning Enable

<input checked="" type="checkbox"/> #00	<input type="checkbox"/> #1E
<input checked="" type="checkbox"/> #01	<input type="checkbox"/> #17
<input type="checkbox"/> #02	<input type="checkbox"/> #1E
<input type="checkbox"/> #03	<input type="checkbox"/> #1E
<input type="checkbox"/> #04	<input type="checkbox"/> #2C
<input type="checkbox"/> #05	<input type="checkbox"/> #21
<input type="checkbox"/> #06	<input type="checkbox"/> #22
<input type="checkbox"/> #07	<input type="checkbox"/> #22
<input type="checkbox"/> #08	<input type="checkbox"/> #24
<input type="checkbox"/> #09	<input type="checkbox"/> #25
<input type="checkbox"/> #10	<input type="checkbox"/> #26
<input type="checkbox"/> #11	<input type="checkbox"/> #27
<input type="checkbox"/> #12	<input type="checkbox"/> #28
<input type="checkbox"/> #13	<input type="checkbox"/> #29
<input type="checkbox"/> #14	<input type="checkbox"/> #30
<input type="checkbox"/> #15	<input type="checkbox"/> #31

**Amp:** This column lists the power amplifiers by ID number and name.

**CH:** This column lists the power amplifier channels.

**Wattage:** This column is used to specify the wattage at which you want NetworkAmp Manager to issue a warning. Range: 1.6–4000.

**Temp:** This column is used to specify the temperature at which you want NetworkAmp Manager to issue a warning. Range: 1–127°C or 34–261°F.

**Impedance max:** This column is used to specify a maximum impedance at which you want NetworkAmp Manager to issue a warning. Range: 0–50Ω. If a value greater than 50Ω is entered, “Never” appears and the warning is disabled.

**Impedance min:** This column is used to specify a minimum impedance at which you want NetworkAmp Manager to issue a warning. Range: 0–50Ω. If a value greater than 50Ω is entered, “Never” appears and the warning is disabled.

*Note: If you enter an invalid value, it will automatically be changed to the nearest valid value.*

**Warning Enable:** These check boxes are used to enable and disable threshold warnings for each amp. When selected, NetworkAmp Manager issues a warning when the amp exceeds one of the specified thresholds. When unselected, no warning is issued.

To copy an individual threshold setting, you must double-click it in order to select the actual value, and then choose Copy from the Edit menu or the pop-up menu that appears when you right-click. To paste the setting, double-click the destination, and then choose Paste from the Edit menu or the pop-up menu. Multiple settings can be copied and pasted by dragging and you can expand or reduce your selection by holding down the Shift key and using the arrow keys.

## 6 Other Functions

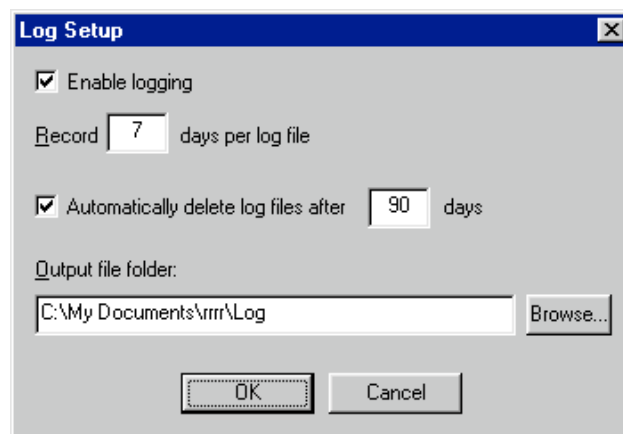
### Logging Events

NetworkAmp Manager compares the threshold values set on the ACU Threshold page (see [page 23](#)) with the amp's operating status and issues a warning if a value is exceeded. Warnings are displayed in the Log window (see [page 28](#)) and recorded to the log file. Log files are CSV format text files that can be opened by any text editor, word processor, or spreadsheet.

*Note: Don't open the log file while NetworkAmp Manager is running. Warnings may not be recorded to the log file properly if you do.*

### Log Setup

The Log Setup dialog box is used to configure logging. Note that the Log window is not affected by these settings. To open the Log Setup dialog box, choose Log Setup from the Option menu.



**Enable logging:** This check box is used to enable and disable logging to file. Select it to enable logging.

**Record xx days per log file:** Here you can specify the number of days to record in each log file. When the number of days is exceeded, the current log file is closed and subsequent events are recorded to a new log file.

**Automatically delete log files after xx days:** When this check box is selected, log files older than the specified number of days are automatically deleted.

**Output file folder:** This is used to specify the folder into which NetworkAmp Manager stores its log files. It also determines the folder that the automatic delete function searches for old log files. By default, log files are stored in a folder called “Log,” which resides in the project folder. Use this option when you want to store the log file elsewhere.

*Note: Be sure to select a folder that's on the same hard disk as the project file.*

Log files are named using the date on which they were created with the format “ddmmmyyyy.csv”, where “dd” is the day from 01 to 31, “mmm” is the month (Jan, Feb, Mar, Apr, May, Jun, Jul, Aug, Sep, Oct, Nov, Dec), and “yyyy” is the year. For example, “01Aug2002.csv”.

Events are recorded in the log file in chronological order one line at a time, each line being prefixed with the date and time at which the event took place with the format “dd/mm/yyyy, hour:minute:second”. For example, “01/Aug/2002, 21:30:25”.



There are five types of event: Warning, Online/Offline Status, Power Switch, Error, and Network Mode. These are explained below.

## 1 Warning Event

This type of event occurs when a specified threshold is exceeded (see [page 23](#)).

Date

Time

Warning

ACU

Amp

Ch

PTWSO (protect, over temp, over wattage, speaker terminal short, speaker terminal open)

CurrVpre (current pre-fader voltage)

CurrVsp (current speaker terminal voltage)

CurrWsp (current speaker terminal wattage)

CurrImp (current impedance)

CurrClip (current clipping)

CurrTemp (current temperature)

LastVpre (last pre-fader voltage)

LastVsp (last speaker terminal voltage)

LastWsp (last speaker terminal wattage)

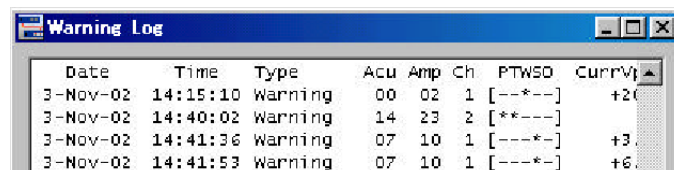
LastImp (last impedance)

LastClip (last clipping)

LastTemp (last temperature)

For clarity, the parameters listed above are shown on separate lines.

Each Warning event is recorded in the log file, and displayed in the Log window, on a single line. Titles are displayed on the top line (i.e., Date, Time, Type, etc), as shown below.



Date	Time	Type	Acu	Amp	Ch	PTWSO	CurrVpre
3-Nov-02	14:15:10	Warning	00	02	1	[--*--]	+20
3-Nov-02	14:40:02	Warning	14	23	2	[**---]	+20
3-Nov-02	14:41:36	Warning	07	10	1	[---*-]	+30
3-Nov-02	14:41:53	Warning	07	10	1	[---*-]	+60

## 2 Online/Offline Status Event

This type of event occurs when a networked device comes online (e.g., a new device is detected) or when a device goes offline.

Date, Time, Detect&Lost, Message

For example:

01/Aug/2002, 21:30:25, Detected, New amplifier detected  
[ACU#00 AMP#00]

In other words, amp #00, connected to ACU #00, came online at 21:30:25 on 01/Aug/2002.

The Detect&Lost variable can be: Detected (i.e., online) or Lost (i.e., offline)

The Message variable can be any of the following:

New amplifier detected [ACU#xx AMP#yy]

Amplifier gone offline [ACU#xx AMP#yy]

```
New ACU16-C detected [ACU#xx]
ACU16-C gone offline [ACU#xx]
New NHB32-C detected [NHB#xx]
NHB32-C gone offline [NHB#xx]
```

Online/Offline Status events appear in blue in the Log window.

### 3 Power Switch Event

This type of event occurs when an amplifier is set to On or Standby.

Date, Time, LineKind, Device

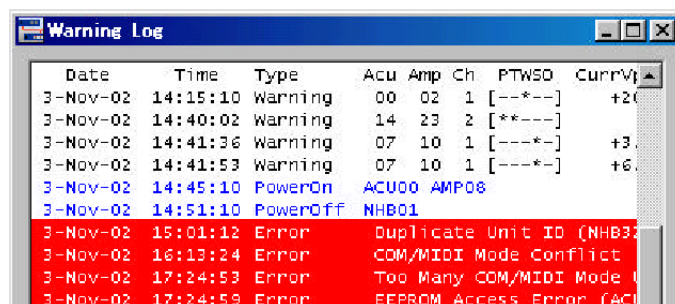
For example:

```
01/Aug/2002, 21:30:25, PowerOn, [ACU#00 AMP#00]
```

In other words, amp #00, connected to ACU #00, was turned on at 21:30:25 on 01/Aug/2002.

The LineKind variable can be: PowerOn or Standby

Power Switch events appear in blue in the Log window, as shown below.



Date	Time	Type	Acu	Amp	Ch	PTWSO	Currv
3-Nov-02	14:15:10	Warning	00	02	1	[--*--]	+20
3-Nov-02	14:40:02	Warning	14	23	2	[**---]	
3-Nov-02	14:41:36	Warning	07	10	1	[---*-]	+3
3-Nov-02	14:41:53	Warning	07	10	1	[---*-]	+6
3-Nov-02	14:45:10	PowerOn	ACU00	AMP08			
3-Nov-02	14:51:10	PowerOff	NHB01				
3-Nov-02	15:01:12	Error					Duplicate Unit ID (NHB32-C:#00)
3-Nov-02	16:13:24	Error					COM/MIDI Mode Conflict
3-Nov-02	17:24:53	Error					Too Many COM/MIDI Mode Units!
3-Nov-02	17:24:59	Error					EEPROM Access Error (ACU#xx)

### 4 Error Event

This type of event occurs when either a system error or parameter error occurs.

Date, Time, Error, ErrorMessage

For example:

```
01/Aug/2002, 21:30:25, Error, Duplicate Unit ID (NHB32-C:#00)
```

In other words, at 21:30:25 on 01/Aug/2002, it was detected that NHB #00 is set to the same ID as another NHB32-C on the network.

The ErrorMessage variable can be any of the following:

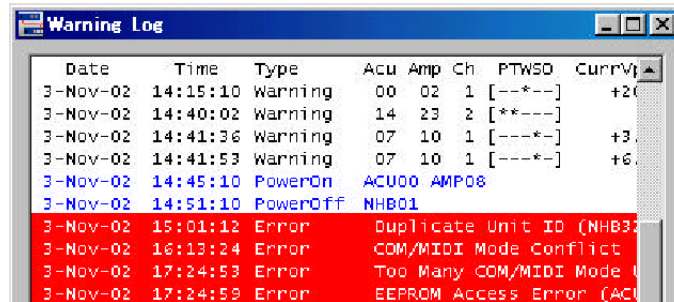
```
Duplicate Unit ID [NHB#xx]
Duplicate Unit ID [ACU#xx]
Unit COM/MIDI Mode Conflict!
Too Many COM/MIDI Mode Units!
Unit EEPROM Access Error! [NHB#xx]
Unit EEPROM Access Error! [ACU#xx]
AES/EBU Input Sync Error [NHB#xx AES/EBUx CH1/2]
AES/EBU Input Sync Error [NHB#xx AES/EBUx CH3/4]
AES/EBU Input Sync Error [NHB#xx AES/EBUx CH5/6]
```

```

AES/EBU Input Sync Error [NHB#xx AES/EBUx CH7/8]
Word Clock Unlocked [NHB#xx]
Word Clock Unlocked [ACU#xx]
Unexpected data change detected [NHB#xx...]
Unexpected data change detected [ACU#xx...]

```

Error events appear highlighted in red in the Log window, as shown below.



Date	Time	Type	Acu	Amp	Ch	PTWSD	CurrV
3-Nov-02	14:15:10	Warning	00	02	1	[--*--]	+20
3-Nov-02	14:40:02	Warning	14	23	2	[**---]	
3-Nov-02	14:41:36	Warning	07	10	1	[---*-]	+30
3-Nov-02	14:41:53	Warning	07	10	1	[---*-]	+60
3-Nov-02	14:45:10	PowerOn	ACU00	AMP08			
3-Nov-02	14:51:10	PowerOff	NHB01				
3-Nov-02	15:01:12	Error				Duplicate Unit ID (NHB01)	
3-Nov-02	16:13:24	Error				COM/MIDI Mode Conflict	
3-Nov-02	17:24:53	Error				Too Many COM/MIDI Mode	
3-Nov-02	17:24:59	Error				EEPROM Access Error (ACU00)	

## 5 Network Mode

This type of event occurs when COM or MIDI is activated or deactivated.

Date, Time, NetMode, Mode

For example:

01/Aug/2002, 21:30:25, NetMode, Mode = COM

In other words, COM mode was engaged at 21:30:25 on 01/Aug/2002.

The Mode variable can be: COM, MIDI, or NORMAL

Network Mode events appear in blue in the Log window

## Log Window

The Log window opens automatically, if it's not already, when an event occurs. This window can also be opened by choosing Log Window from the Window menu.

Each time an event occurs, the details are displayed in the window, which scrolls automatically.

Warning Log

Date	Time	Type	Acu	Amp	Ch	PTWSD	CurrVpre	CurrVsp	CurrWsp	CurrImp	CurrClip	CurrTemp	LastVpre	LastVsp	LastWsp	LastImp	LastClip	LastTemp	
03/Nov/2002	14:15:10	Warning	00	02	1	[--*--]	+20.0	71.05	841.3	6.0	CLIP	42C	+20.0	68.22	775.6	6.0	CLIP	41C	
03/Nov/2002	14:40:02	Warning	14	23	2	[*--*--]	0	0	0	6.0			86C	+14.5	70.90	837.8	6.0	85C	
03/Nov/2002	14:41:36	Warning	07	10	1	[---*--]	+3.20	14.20	134.3	1.5			70C	+6.30	23.81	444.3	2.0	69C	
03/Nov/2002	14:41:53	Warning	07	10	1	[---*--]	+6.20	29.44	619.8	1.4			72C	+6.30	30.43	420.9	2.2	72C	
03/Nov/2002	14:45:10	Warning	03	16	1	[---*--]	+0.00	24.00	4.026	143			38C	+0.00	24.00	48.00	12.0	39C	
03/Nov/2002	14:51:10	Warning	00	02	1	[--*--]	+20.0	71.05	841.3	6.0	CLIP	42C	+20.0	68.22	775.6	6.0	CLIP	41C	
03/Nov/2002	15:01:12	Warning	14	23	2	[*--*--]	0	0	0	6.0			86C	+14.5	70.90	837.8	6.0	85C	
03/Nov/2002	16:13:24	Warning	03	16	1	[---*--]	+16.6	67.20	0.326	>7K	CLIP		76C	+18.3	71.52	852.5	6.0	76C	
03/Nov/2002	17:24:53	Warning	07	10	1	[---*--]	+6.20	29.44	619.8	1.4			72C	+6.30	30.43	420.9	2.2	72C	
03/Nov/2002	17:24:59	Warning	14	23	2	[*--*--]	0	0	0	6.0			84C	+14.5	70.90	837.8	6.0	83C	
03/Nov/2002	17:31:30	Warning	07	10	1	[---*--]	+3.20	14.20	134.3	1.5			70C	+6.30	23.81	444.3	2.0	69C	
03/Nov/2002	17:48:51	Warning	07	10	1	[---*--]	+3.20	14.20	134.3	1.5			70C	+6.30	23.81	444.3	2.0	69C	
03/Nov/2002	18:45:10	Warning	03	04	2	[---*--]	+16.6	67.20	0.106	>7K	CLIP		50C	+15.3	71.52	0.125	>7K	52C	
03/Nov/2002	18:45:10	Warning	02	04	1	[---*--]	+10.1	33.20	0.113	>7K			50C	+15.3	65.52	0.095	>7K	52C	
03/Nov/2002	18:51:13	Warning	07	10	1	[---*--]	+6.20	29.44	619.8	1.4			72C	+6.30	30.43	420.9	2.2	72C	
03/Nov/2002	18:55:10	Warning	05	06	2	[---*--]	+0.00	24.00	4.026	143			38C	+0.00	24.00	48.00	12.0	39C	
03/Nov/2002	19:02:19	Warning	03	02	1	[---*--]	+20.0	71.05	841.3	6.0	CLIP	42C	+20.0	68.22	775.6	6.0	CLIP	41C	
03/Nov/2002	19:10:32	Warning	14	23	2	[*--*--]	0	0	0	6.0			86C	+14.5	70.90	837.8	6.0	85C	
03/Nov/2002	19:16:40	Warning	11	16	1	[---*--]	+16.6	67.20	0.326	>7K	CLIP		76C	+18.3	71.52	852.5	6.0	CLIP	76C
03/Nov/2002	19:21:51	Warning	01	07	2	[---*--]	+6.20	29.44	619.8	1.4			72C	+6.30	30.43	420.9	2.2	72C	
03/Nov/2002	19:40:09	Warning	14	23	2	[*--*--]	0	0	0	6.0			84C	+14.5	70.90	837.8	6.0	83C	
03/Nov/2002	19:45:10	Warning	02	04	2	[---*--]	+16.6	67.20	0.106	>7K	CLIP		50C	+18.3	71.52	0.125	>7K	CLIP	52C
03/Nov/2002	19:51:02	Warning	02	04	1	[---*--]	+10.1	33.20	0.113	>7K			50C	+15.3	65.52	0.095	>7K	52C	
03/Nov/2002	19:55:31	Warning	14	23	2	[*--*--]	0	0	0	6.0			84C	+14.5	70.90	837.8	6.0	83C	
03/Nov/2002	19:55:31	Warning	02	04	2	[---*--]	+16.6	67.20	0.106	>7K	CLIP		50C	+18.3	71.52	0.125	>7K	CLIP	52C
03/Nov/2002	19:55:31	Warning	02	04	1	[---*--]	+10.1	33.20	0.113	>7K			50C	+15.3	65.52	0.095	>7K	52C	
03/Nov/2002	19:55:33	Warning	02	04	2	[---*--]	+16.6	67.20	0.106	>7K	CLIP		50C	+18.3	71.52	0.125	>7K	CLIP	52C
03/Nov/2002	19:59:42	Warning	02	04	1	[---*--]	+10.1	33.20	0.113	>7K			50C	+15.3	65.52	0.095	>7K	52C	
03/Nov/2002	20:01:03	Warning	14	23	2	[*--*--]	0	0	0	6.0			84C	+14.5	70.90	837.8	6.0	83C	
03/Nov/2002	20:15:20	Warning	02	04	2	[---*--]	+16.6	67.20	0.106	>7K	CLIP		50C	+18.3	71.52	0.125	>7K	CLIP	52C

Close

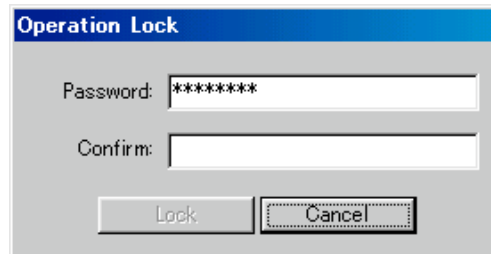
## Locking NetworkAmp Manager

You can lock NetworkAmp Manager to prevent unauthorized operation.

### Locking NetworkAmp Manager

**1 Choose Operation Lock from the Option menu.**

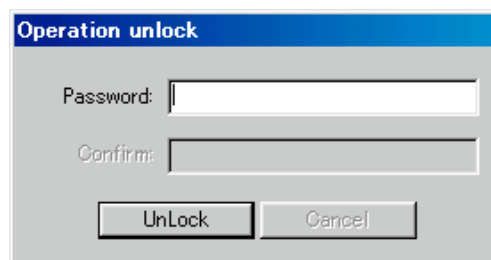
The Operation Lock dialog box shown below appears.

The image shows a dialog box titled "Operation Lock" with a blue header bar. It contains two text input fields: "Password:" with the text "\*\*\*\*\*" and "Confirm:". At the bottom, there are two buttons: "Lock" and "Cancel".

**2 Enter a password in the Password and Confirm fields.**

**3 Click Lock.**

NetworkAmp Manager is locked and the Operation Unlock dialog box appears, as shown below.

The image shows a dialog box titled "Operation unlock" with a blue header bar. It contains two text input fields: "Password:" and "Confirm:". At the bottom, there are two buttons: "UnLock" and "Cancel".

**4 To unlock NetworkAmp Manager, enter the password in the Password field, and then click Unlock.**

If you enter the correct password, NetworkAmp Manager is unlocked and the Operation Unlock dialog box closes.

The specified password is stored in a plain text file in the same folder as the project. If you forget the password, delete the password file, and then click Unlock, making sure that the Password and the Confirm fields are empty.

## Using COM & MIDI Modes

CobraNet's Serial Bridge feature allows serial data to be transmitted over the network. Normally, the ACU16-C and NHB32-C use the Serial Bridge to transmit amp control data. However, it can be used to transmit MIDI data (Program Change and Control Change) or AD824 head amp control data between any two NHB32-Cs on the network.

The Serial Bridge cannot carry Amp Control, MIDI, and AD824 data simultaneously. While MIDI mode is active, Amp Control data is not transmitted and only communications between the MIDI ports of the two specified NHB32-Cs takes place. Likewise, while COM mode is active, only communications between the COM ports of the two specified NHB32-Cs takes place.

Hookup examples featuring MIDI and COM modes are provided in the printed *ACU16-C/NHB32-C Owner's Manual*.

- 1 To use MIDI or COM mode, choose COM/MIDI Mode from the Option menu.**

The COM/MIDI Mode dialog box shown below appears.



- 2 Use the pop-up menus to select two NHB32-Cs on the network.**

If both NHB32-Cs are online, the COM and MIDI buttons become available.

- 3 Click COM to engage COM mode, click MIDI to engage MIDI mode.**

The selected mode is activated and all other NetworkAmp Manager functions are inactive. The COM/MIDI Mode dialog box remains open while COM or MIDI mode is active.

- 4 To cancel COM or MIDI mode, click Deactivate COM/MIDI mode.**

Click Disconnect from network to disconnect from the network without cancelling the COM or MIDI mode.

- 5 Click Close to close the COM/MIDI Mode dialog box.**

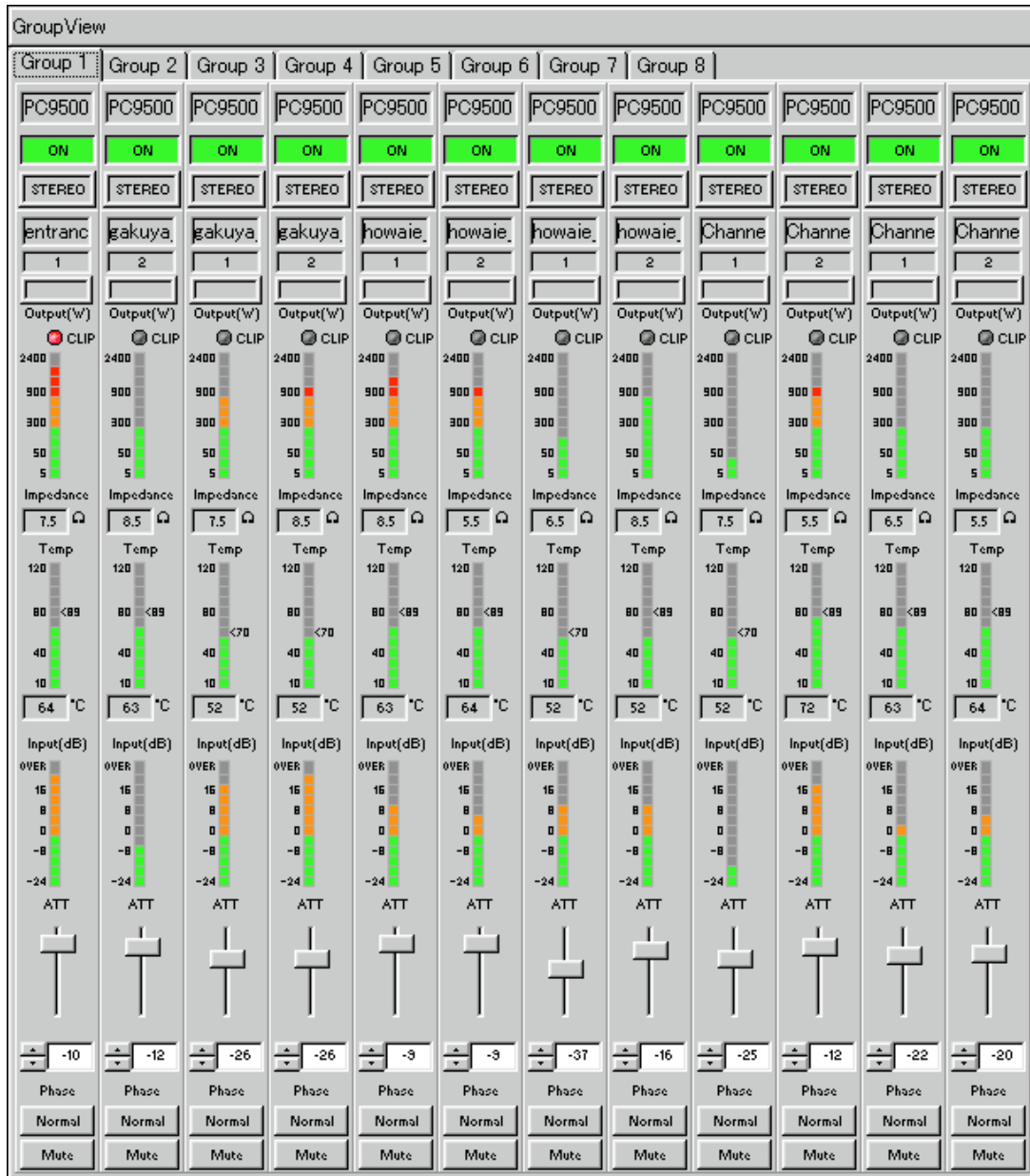
If the Close button is unavailable, cancel COM or MIDI mode, or disconnect from the network.

If you are running NetworkAmp Manager on several PCs, while COM or MIDI mode is active, the COM/MIDI Mode dialog box appears on all PCs and all control and monitoring functions are disabled. COM or MIDI mode can be cancelled from any PC.

## Group View

With Group View you can view and control groups of channels from any amplifiers on the network. There are eight group pages and up to 16 channels can be displayed on each.

To open the Group View page, choose Group View from the View menu.



The eight groups are selected by clicking the tabs along the top of the page. The Network tab is used when NetworkAmp Manager is being run on several PCs. For example, if you select Group View page #1 on PC #1, providing that the Group View page (or ACU Amp page or Channel Detail page) is open on PC #2, its Network tab will display the same channels as page #1 of PC #1. In fact, all networked PCs will display the same group of channels, and you will not be able to display different groups on the other PCs. If the Group View window is not open, nothing happens on PC #2.

*See the next page for information on editing groups...*

## Editing Groups

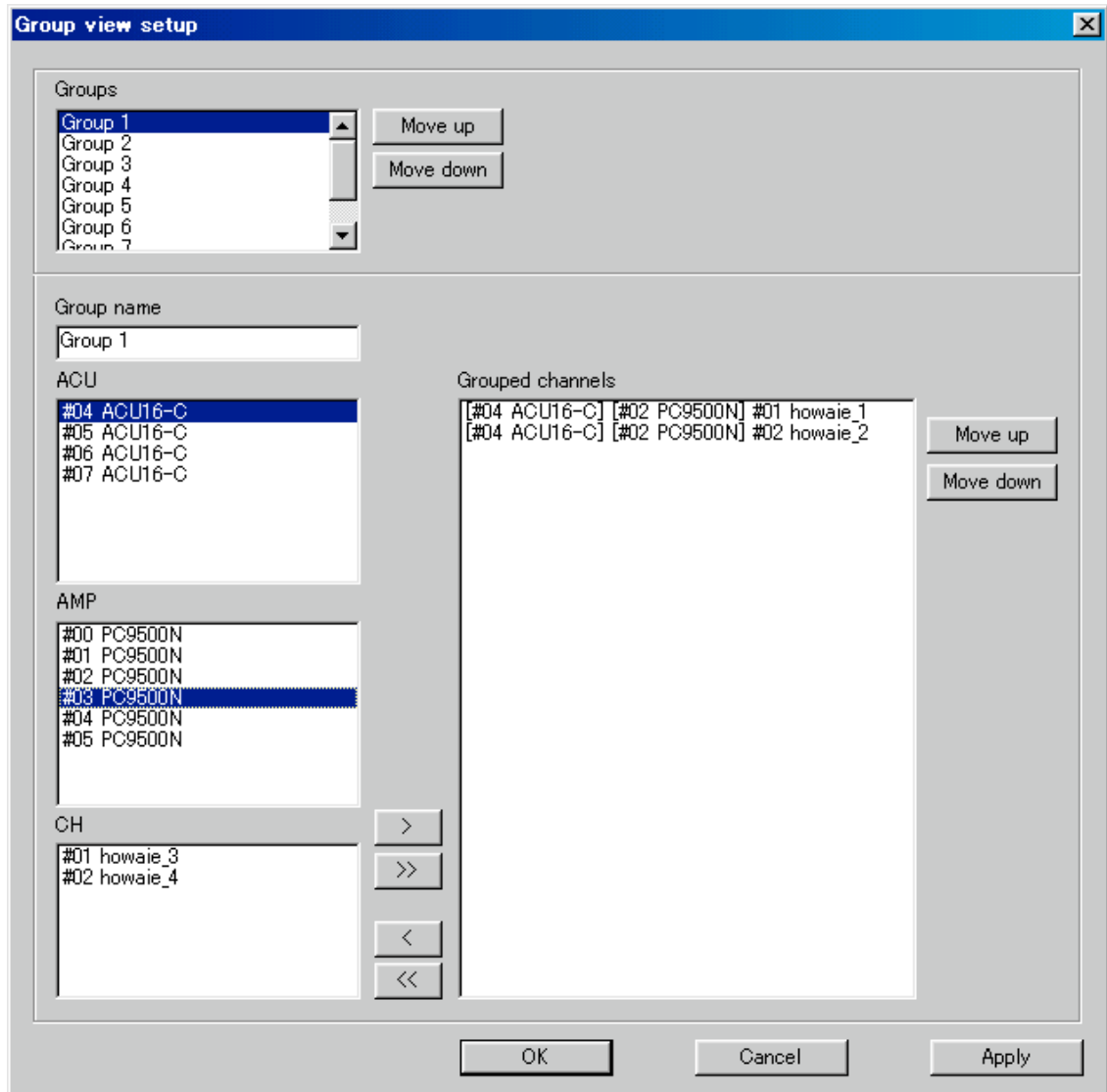
Up to 16 channels can be added to each Group View page.

**1 Choose Group View from the View menu.**

The Group View page appears.

**2 Right-click on the page and select Edit Group View from the pop-up menu.**

The Group View Setup dialog box appears, as shown below.



**3 Select a group in the Groups list.**

You can sort groups by using the Move up and Move down buttons.

**4 Use the Group name field to edit the group's name.**

This is the name that appears on the Group View page tabs.

**5 Select the ACU16-C to which the power amplifier is connected in the ACU list.**

The power amplifiers connected to the selected ACU16-C are displayed in the AMP list.

**6 Select a power amplifier in the AMP list.**

The channels of the selected power amplifier are displayed in the CH list.



**7 Select a channel in the CH list and click the Add [>] button.**

The channel is added to the group.

To add all channels, click the Add All [>>] button.

**8 To remove a channel from the group, select it and then click the Remove [<] button.**

To remove all channels, click the Remove All [<<] button.

You can sort the grouped channels by using the Move up and Move down buttons.

**9 When you've finished, click the OK button to apply your edits and close the Group View Setup dialog box.**

If you click the Apply button, your edits are applied to the Group View and the dialog box remains open. Click Cancel to leave the settings unchanged and close the dialog box.

## Control Link

With Control Link you can group power amplifiers for simultaneous control of power Standby and On. Up to 16 Control Link groups are available.

To open the Control Link page, choose Control Link from the View menu.



The STANDBY and ON buttons are unavailable when no power amplifiers are in a group or when the group is disabled. When a group is enabled, you can click the STANDBY button to simultaneously set all power amplifiers in that group to Standby mode. When an ON button is clicked, the amplifiers in that group are turned on.

When all power amplifiers in the group are in Standby mode, the STANDBY button appears depressed. When all power amplifiers in a group are on, the ON button appears depressed. If some power amplifiers in the group are in Standby mode and some are on, both buttons appear in the up position.

*See the next page for information on editing groups...*

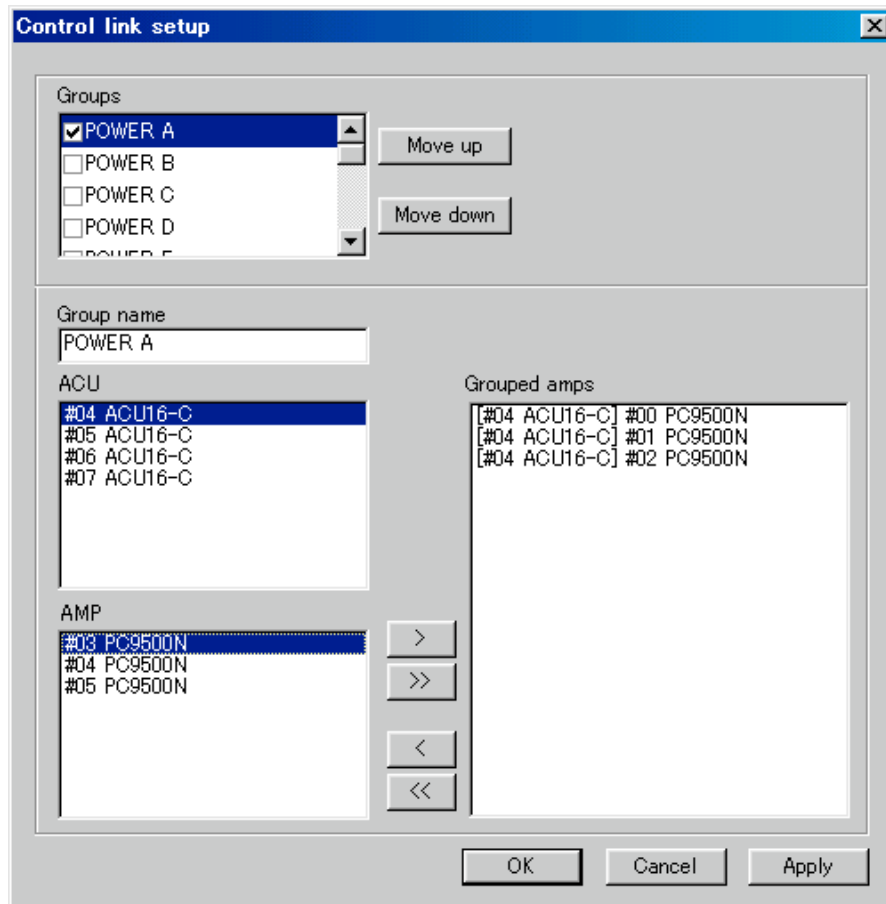
## Editing Groups

- 1 **Choose Control Link from the View menu.**

The Control Link page appears.

- 2 **Right-click on the page and select Edit Control Link from the pop-up menu.**

The Control Link Setup dialog box appears, as shown below.



- 3 **Select a group in the Groups list.**
- 4 **To enable the group, click its check box.**  
The check boxes are used to enable and disable groups.  
You can sort the groups by using the Move up and Move down buttons.
- 5 **Use the Group name field to enter a name for the group.**  
This is the name that appears on the Control Link page.
- 6 **Select the ACU16-C to which the power amplifier is connected in the ACU list.**  
The power amplifiers connected to the selected ACU16-C are displayed in the AMP list.
- 7 **Select a power amplifier in the AMP list and click the Add [>] button.**  
The power amplifier is added to the group.  
To add all power amplifiers, click the Add All [>>] button.
- 8 **To remove a power amplifier from the group, select it and then click the Remove [<] button.**  
To remove all power amplifiers, click the Remove All [<<] button.

- 9 **When you've finished, click the OK button to apply your edits and close the Control Link Setup dialog box.**

If you click the Apply button, your edits are applied and the dialog box remains open. Click Cancel to leave the settings unchanged and close the dialog box.

# Appendix

## Troubleshooting

Symptom	Advice
The Connect to Network command in the File menu is unavailable?	This command is unavailable if no PC interface has been specified. Choose General Setup from the Option menu and specify interfaces for MIDI IN and MIDI OUT.
Forgotten the password?	Delete the password file inside the project folder, and then click Unlock, making sure that the Password and the Confirm fields are empty.
Pressing the F1 key opens the help document in the wrong language?	Choose the required language from the Help—>Help Topics sub-menu. NetworkAmp Manager will remember your selection and open the same document the next time you choose Help from the help menu, or press the F1 key.

## Keyboard Shortcuts

### File Menu

CTRL+N	Creates a new project
CTRL+O	Opens an existing project
CTRL+S	Saves the current project
SHIFT+CTRL+S	Saves the current project with a new name

### Edit Menu

CTRL+X	Moves the currently selected item to the clipboard
CTRL+C	Copies the currently selected item to the clipboard
CTRL+V	Pastes the clipboard contents to the selected position
DELETE	Deletes the currently selected item

### Help Menu

F1	Opens this manual (PDF format)
----	--------------------------------

---

# Glossary

---

This glossary contains terms relevant to NetworkAmp Manager, the ACU16-C, and NHB32-C. A wealth of information about CobraNet, with sections especially for designers and installers, is available on the Peak Audio Web site at <http://www.peakaudio.com>. If you are designing a network, we strongly recommend that you visit this Web site and study the information available in order to take full advantage of the CobraNet technology.

**100Base-T:** See Fast Ethernet.

**100Base-FX:** Fast Ethernet utilizing multimode fiber optic cables, with a maximum transmission distance of two kilometers. Single mode fiber supports distances of over 100 kilometers.

**100Base-TX:** Fast Ethernet utilizing Category 5 (CAT5) twisted pair data grade cables and RJ-45 connectors. These cables are readily available in a range of lengths and colors. The maximum allowed cable run in an 100Base-T Ethernet network is 100 meters. If you need to make custom cables, be sure to maintain the natural twist of the conductors as close to the connector as possible. More than 25 mm of untwisted cable can affect performance. If you're using cable ties, don't tighten them so as to deform the outer insulation, and do not bend cables tightly. Doing so may affect the cable's impedance and degrade performance.

**1000Base-T:** See Gigabit Ethernet.

**APJ:** The file name extension of NetworkAmp Manager projects (e.g., My project.apj).

**Asynchronous:** Not synchronized. Often used to describe communications between devices that are not synchronized by a common clock, in which data is sent intermittently rather than in a steady stream. CobraNet's Serial Bridge is asynchronous. *Contrast with* Isochronous.

**Auto-negotiation:** The automatic negotiations that go on between two network devices in order to determine half/full-duplex operation and data transfer rate (e.g., 10, 100, 1000 Mbps) before actual data transmission commences. Auto-negotiation only works on switched networks. With repeater networks, all data transfers are half-duplex and the transfer rate is determined by the slowest device on the network. All CobraNet interfaces support auto-negotiation.

**Bundle:** CobraNet distributes digital audio data in bundles. One Ethernet packet contains one bundle. A single bundle can carry eight channels of 20-bit/48 kHz digital audio, or seven channels of 24-bit/48 kHz digital audio. Bundles are numbered from 1 through 65,279. Bundles can be transmitted one-to-one (unicast) or one-to-many (multicast). Network efficiency can be optimized by using all eight channels in each bundle instead of, for example, using four channels in two bundles or two channels in four bundles. *See also* Multicast bundle *and* Unicast bundle.

**Bundle 0:** Not really a bundle as such, more of a null setting that can be made on CobraNet devices to disable transmission or reception as necessary.

**CAT3:** Category 3 twisted pair cable supports a maximum data transfer rate of 10 Mbps and is used for 10Base-T Ethernet networks.

**CAT5:** Category 5 twisted pair cable supports a maximum data transfer rate of 100 Mbps and is used for 100base-TX Ethernet networks.

**CobraCAD:** Freely available software from Peak Audio for verification and performance testing of CobraNet network designs. The latest version includes device icons for the ACU16-C and NHB32-C.

**CobraNet:** Developed by Peak Audio, CobraNet technology allows real-time uncompressed digital audio distribution over industry standard 100Base-T Ethernet networks. Up to 128 channels, 64 in each direction, can be carried simultaneously over a switched 100Base-T network (64 channels on repeater networks). CobraNet supports a 48 kHz sam-

pling rate with 16, 20, or 24-bit resolution. CobraNet devices can happily coexist with networked computers, printers, etc., on a switched 100Base-T Ethernet network, however, a dedicated network infrastructure is strongly recommended.

**CobraNet audio channel:** In CobraNet terminology, an audio channel is one 48 kHz digital audio signal with a 16, 20, 24-bit resolution.

**CobraNet primary/secondary ports:** CobraNet interfaces feature built-in redundancy, with primary and secondary ports for connection to primary and secondary networks. If an unrecoverable fault should occur on the primary network, CobraNet automatically switches to the secondary network, providing uninterrupted operation. Both ports are transformer isolated and fully comply with the IEEE 802.3 standard.

**Conductor:** The device on a CobraNet network that acts as wordclock master and network arbitrator. Only one device can be Conductor at any one time. If that device is unplugged or fails, another device automatically takes over as Conductor. The conductor ensures that only one device transmits data in each bundle at any one time. *See also* Performer.

**Crossover Ethernet cable:** An Ethernet cable whose data transmit and receive conductors have been swapped. Crossover cables are used to connect two Ethernet devices directly to each other. They should never be used to connect devices to a hub. *Contrast with* Straight Ethernet cable.

**CSV:** Abbreviation for Comma Separated Value file. CSV files, which are commonly used to exchange table-like data from spreadsheets and databases, use commas to separate the individual values on each line. NetworkAmp Manager log files use the CSV format and can easily be imported into a spreadsheet for further analysis.

**Ethernet:** The most widely implemented network protocol. The first implementation 10Base-T supports data transfer rates of 10 Mbps. The next implementation, 100Base-T (or Fast Ethernet) supports 100 Mbps. The newest version, Gigabit Ethernet, supports transfer rates of 1,000 Mbps (i.e., 1 gigabit).

**Fast Ethernet:** Also known as 100Base-T, the Ethernet standard that supports data transfer rates of 100 Mbps. CobraNet runs on Fast Ethernet networks.

**Gigabit Ethernet:** Also known as 1000Base-T, the Ethernet standard that supports data transfer rates of 1,000 Mbps. CobraNet supports Gigabit Ethernet. A Gigabit switched network can handle up to 1,028 CobraNet audio channels.

**Hub:** *See* Repeater hub *and* Switching hub.

**Isochronous:** Occurring at fixed intervals in time. Often used to describe real-time communications between devices in which data must be delivered at regular intervals. CobraNet transmits digital audio data isochronously. *Contrast with* Asynchronous.

**LAN (Local Area Network):** A network that exists in the same building or group of buildings. CobraNet is a LAN technology. *See also* WAN.

**Managed hub:** A type of switching hub that improves network efficiency by segregating a LAN into smaller virtual LANs.

**Media converter:** A device that converts from one type of distribution media to another, for example, Ethernet (100Base-TX) to fiber optic (100Base-FX).

**Multicast bundle:** CobraNet bundles 1 through 255 are multicast bundles, which means they are transmitted to all devices on the network regardless of whether any devices are configured to receive them. Multicast bundles allow point-to-multipoint connections and can be used with repeater hubs or switching hubs. Advantages include the ability to distribute digital audio to any number of devices simply by configuring those devices to receive the same bundle. Disadvantages are that all available network bandwidth is used, devices receive all bundles and must decide for themselves whether to receive or ignore the data, and any 10Base-T data ports (e.g., computers, printers, etc.) will be flooded with data. It can be stressful for switching hubs, which must work hard to transmit all incoming data to all output ports. *Contrast with* Unicast Bundle.

**Network topology:** The structure of a network. Common network topologies include star, ring, tree, and bus. Ethernet networks utilizing hubs are typically wired in a star topology, although a network may consist of various topologies.

**Performer:** The devices on a CobraNet network that are wordclock slaves. Performers synchronize to the conductor. *See also* Conductor.

**Propagation delay:** CobraNet has a fixed propagation delay of 5.33 ms. This will be acceptable for some applications, but if you're compensating for microphone placement or trying to eliminate the Haas effect, you can use this fixed value to calculate any compensatory delay times that may be necessary.

**Repeater hub:** A basic network hub that retransmits all incoming data to all of its output ports.

**RJ-45 connector:** The type of connector used to connect 10Base-T, 100Base-T, and 1000Base-T Ethernet devices.

**RS-232C:** A serial interface for connecting serial devices, offering a transmission distance of approximately 15 meters, typically using 9- or 25-pin D-sub connectors.

**RS-422:** A balanced serial interface for connecting serial devices, offering a transmission distance of approximately 1 kilometer and higher data rates and greater immunity to interference than RS-232C.

**RS-485:** A balanced serial interface for connecting serial devices. Similar to RS-422 but with support for multiple receivers and transmitters, offering bidirectional half-duplex communications over a single twisted pair.

**Sampling rate:** CobraNet supports a single sampling rate of 48 kHz.

**Serial Bridge:** CobraNet's Serial Bridge feature allows serial data up to 57.6 kbps to be transmitted over the network. Due to the process of packetizing and re-serializing serial data, data sent over the Serial Bridge is delayed approximately 10 milliseconds.

**Straight Ethernet cable:** An Ethernet cable that is wired pin-for-pin (i.e., pin 1 connects to pin 1, pin 2 to pin 2, and so on). Straight cables are used to connect Ethernet devices to networks. You can easily tell whether an Ethernet cable is crossover or straight by looking at the wiring of both connectors. If the wiring is identical, it's a straight cable. If it's different, it's a crossover cable. *Contrast with* Crossover Ethernet cable.

**STP (Shielded Twisted Pair):** A cable consisting of two shielded conductors that are twisted together.

**Switching hub:** Sometimes referred to as a *switch*, switching hubs know the network address of each device on the network and automatically route network traffic accordingly, so each device receives only data addressed to it.

**Unicast bundle:** CobraNet bundles 256 through 65,279 are unicast bundles, which means they are transmitted only when two devices are configured to transmit and receive them. Unicast bundles only allow point-to-point connections and as such are far more bandwidth efficient than multicast bundles. This efficiency means that CobraNet can happily coexist with networked computers, printers, etc., on a switched 100Base-T Ethernet network. However, non-CobraNet devices may unpredictably demand a lot of network bandwidth, which may affect CobraNet performance and even cause audio dropouts, pops, or clicks. A dedicated CobraNet network is strongly recommended for mission critical applications. Unicast bundles can only be used on switched networks. Unicast bundles can be configured to work like multicast bundles, but that's beyond the scope of this glossary. *Contrast with* Multicast Bundle.

**UTP (Unshielded Twisted Pair):** A cable consisting of two unshielded conductors that are twisted together.

**WAN (Wide Area Network):** A network that covers a wide area, typically made up of two or more LANs. CobraNet is not a WAN technology. *See also* LAN.





Yamaha Manual Library  
<http://www2.yamaha.co.jp/manual/english/>

M.D.G., Pro Audio & Digital Musical Instrument Division, Yamaha Corporation  
© 2003 Yamaha Corporation  
IP01A0