

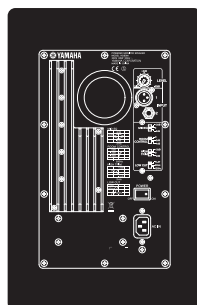
HS Series

Powered Near-field Monitors

HS80M



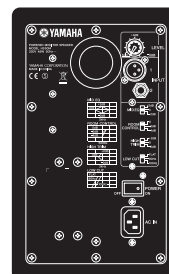
HS80M Rear Panel



HS50M



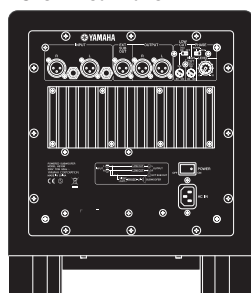
HS50M Rear Panel



HS10W



HS10W Rear Panel



If Your Mixes Sound Good On These, They'll Sound Good Anywhere

HS80M

- 2-way bass-reflex bi-amplified near-field studio monitor with 8" cone woofer and 1" dome high-frequency unit delivers 42 Hz — 20 kHz frequency response.
- 120 watts dynamic bi-amplified power.
- XLR and TRS phone jack inputs accept balanced or unbalanced signals.
- Large Magnets in an Advanced Magnetic Circuit Design
- Level control facilitates precise overall system level matching.
- MID EQ, ROOM CONTROL, and HIGH TRIM response control switches.
- LOW CUT switch.
- Full magnetic shielding.

HS10W

- 8" bass-reflex powered subwoofer delivers solid 30 Hz — 120 Hz frequency response.
- 150 watts dynamic power.
- XLR and TRS phone jack inputs accept balanced or unbalanced signals.
- Balanced XLR L and R outputs connect to the main left and right speakers. L/R mix output connects to a second subwoofer if required.
- Level control facilitates precise overall system level matching.
- Phase switch simplifies phase alignment.
- Low-pass filter control and high-pass filter control with ON/OFF switch.
- Full magnetic shielding.

HS50M

- 2-way bass-reflex bi-amplified near-field studio monitor with 5" cone woofer and 3/4" dome high-frequency unit delivers 55 Hz — 20 kHz frequency response.
- 70 watts dynamic bi-amplified power.
- XLR and TRS phone jack inputs accept balanced or unbalanced signals.
- Large Magnets in an Advanced Magnetic Circuit Design
- Level control facilitates precise overall system level matching.
- MID EQ, ROOM CONTROL, and HIGH TRIM response control switches.
- LOW CUT switch.
- Full magnetic shielding.

HS Series

GENERAL SPECIFICATIONS

Model	HS80M	HS50M	HS10W
Type	Bi-amp 2-way powered speaker	Bi-amp 2-way powered speaker	Powered subwoofer
Crossover frequency	2kHz	3kHz	-
Frequency response (-10dB)	42Hz-20kHz	55Hz-20kHz	30Hz-180Hz
Dimensions (W x H x D)	250 x 390 x 332mm (9.8" x 15.4" x 13.1")	165 x 268 x 222mm (6.5" x 10.6" x 8.7")	300 x 350 x 386mm (11.8" x 13.8" x 15.2")
Weight	11.3kg (24.9lbs)	5.8kg (12.8lbs)	12.5kg (27.6lbs)

SPEAKER SECTION

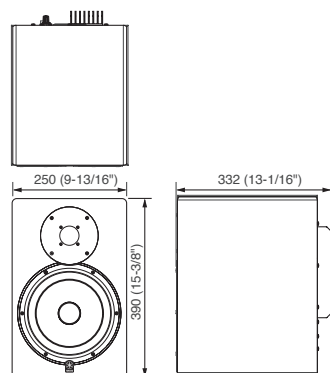
Model	HS80M	HS50M	HS10W
Component	LF	8" cone	5" cone
	HF	1" dome	3/4" dome
Enclosure	Type	Bass-reflex type	Bass-reflex type
	Material	MDF	MDF

AMPLIFIER SECTION

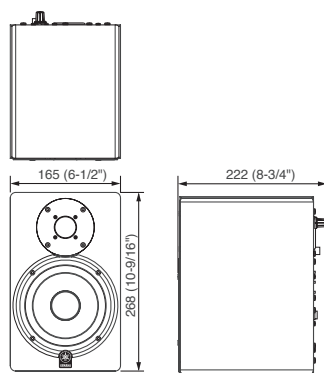
Model		HS80M	HS50M	HS10W
Output	Total	120W (Dynamic power)	70W (Dynamic power)	150W (4Ω, Dynamic power)
	LF	75W (4Ω)	45W (4Ω)	
	HF	45W (8Ω)	25W (8Ω)	
Input sensitivity, Impedance		+4dBu, LEVEL = Center -10dBu, LEVEL = Max		
Output sensitivity, Impedance		-	-	-10dBu/600Ω
Input terminal (Parallel)		1:XLR3-31 (Balance) 2:PHONE (Balance)		
Output terminal		-	-	1:XLR3-32 (Balance)x1 (EXT SUB) 1:XLR3-32 (Balance)x2 (L&R)
Control switch		LEVEL (+4dB/center click) LOW CUT switch (FLAT/80/100Hz,12dB/octave) EQ: MID(+/-2dB at 2kHz), EQ: HIGH(+/-2dB at HF) ROOM CONTROL (0/-2/-4dB: Under 500Hz)		
		LEVEL LOW CUT switch, control: 80-120Hz HIGH CUT control: 80-120Hz PHASE switch: NORM./REV.		
Indicator		POWER ON: White LED		
Power consumption		60W	45W	70W

DIMENSIONS

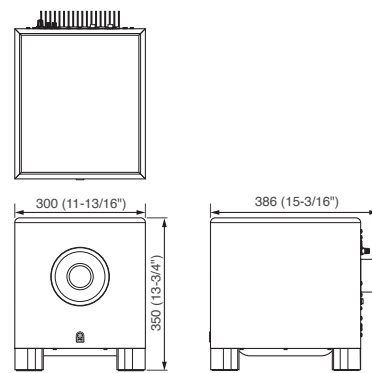
HS80M



HS50M



HS10W



unit : mm